

# THE SUNDAY NEWS

February 3, 2019



**Elora 2018 Tax Receipts:** All tax receipts will be available for pick up at the church on Sunday, February 3, Sunday February 10, Sunday February 17 and Sunday February 24. After February 24<sup>th</sup>, any tax receipts left will be mailed.

## Communion Servers

Would you like to help serve the bread and juice during Communion? Sometimes you'll be bringing it to people in their seats. Other times, you'll serve it to them at the front of the sanctuary. We'll teach you everything you need to know. If you're interested or want to find out more, please speak with Greg.

## HELP?! How do I explore the Bible with my kids?

Are any of these statements true for you? "I don't know how to read the Bible myself, how can I teach my kids about it?", "My kids are too young to read the Bible." "My kids are too old, they will think it is boring.", "I don't know enough to answer my kids' questions."

Come join us our **Faith at Home Parent Discussion time on Sunday, Feb. 10 during 11 am** worship. Come hear ideas, share your ideas, browse resources from toddlers to teens. Come and be encouraged. We will go out from family worship when the children/youth go out. We will meet downstairs while the children/youth have a movie upstairs.

## Week of Guided Prayer & Spiritual Exploration, Feb 24<sup>th</sup> to Mar 2<sup>nd</sup>.



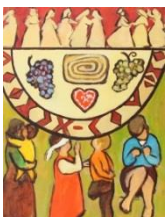
Develop, deepen and explore a relationship with God. Experiment with specific ways to meet God meaningfully. Listening, reflection and awareness are at the heart of this week.

You will be paired with an experienced guide who will suggest specific ways to meet God meaningfully, and guide you in various spiritual practices. During the week you will meet daily for about 30 minutes. Your guide will provide you with scripture passages, poems or stories, art activities and/or meditations for you to explore or pray with at home between meetings. Your confidential meetings with your guide are held in sacred trust.

It costs \$35.00 to participate in the Week of Guided Prayer and Spiritual Exploration.

**Registration forms are available from Greg and at [www.guidedprayer.webs.com](http://www.guidedprayer.webs.com), and will be accepted until Feb 15<sup>th</sup>.**

**Elora's Finances and Property Congregational Meeting** will be Sunday March 3<sup>rd</sup> after worship. Please have your reports to the office by Sunday Feb 10<sup>th</sup> or earlier. Reports for this meeting will be: Finance, Property, Trustees, Solar, UCW financials.



**World Day of Prayer 2019, March 1<sup>st</sup> at 2:00pm at Elora United Church.** Come Everything is Ready! For the women of Slovenia. World Day of Prayer is a global ecumenical movement led by Christian women who welcome you to join in prayer and action for peace and justice. Hosted by Elora UCW.

## Collecting funds for Observer Magazine subscriptions

Renew your subscription or begin a subscription to the United Church of Canada's award-winning magazine. Regularly \$30/year. Those in Elora United's group subscription pay **only \$25**. Look for Observer envelopes on the table in the upper lobby or simply mark "OBSERVER" on any envelope from the pews; then place your envelope on the collection plate. For more info, call Beverly in the office. *Bethany's Observer subscriptions are renewed in June.*



## LGBTQ+ and Christian

Does this describe you or someone you love? The Fergus-Elora Generous Space Group provides support for anyone who identifies as LGBTQ+, parents and allies. Our group meets twice a month. For more information, contact Beth ([beth@generousspace.ca](mailto:beth@generousspace.ca)), or chat with Barb or Greg Smith-Young, ([barbsmithyoung@gmail.com](mailto:barbsmithyoung@gmail.com) [revgreg@bellnet.ca](mailto:revgreg@bellnet.ca) , office 519-846-0122 or home 519-846-2542).

*Generous Space is a Canadian Ministry (www.generousspace.ca)*

## Looking Ahead

|            |             |   |
|------------|-------------|---|
| Mon        | 1:00pm      | Quilters - BR   |
| Thu        | 7:00pm      | EUC Adult Choir Practice – BR                                       |
| Thu        | 7:30pm      | Trustees meeting – at Nancy Van Veen's home                         |
| Sun Feb 10 | 11:00am     | Exploring the Bible with Your Kids                                  |
| Sun Feb 10 | 6:00–8:00pm | Grade 7-12 Youth Sports Themed Dinner at Melville UC                |
| Tue Feb 12 | 6:15-9:00pm | Mission & Resources Board Meeting - BR                              |
| Thu Feb 14 | 7:00pm      | EUC Adult Choir Practice – BR                                       |
| Sun Feb 17 | 6:00-8:00pm | Grade 3-8 Youth and their families Potluck and Games at Melville UC |
| Thu Feb 21 | 7:00pm      | EUC Adult Choir Practice – BR                                       |
| Thu Feb 21 | 8:15pm      | EUC Praise Team Practice – BR                                       |
| Sun Feb 24 | 1:00pm      | Bethany UC Annual Congregational Meeting                            |
| Thu Feb 28 | 7:00pm      | EUC Adult Choir Practice – BR                                       |
| Thu Feb 28 | 8:15pm      | EUC Praise Team Practice – BR                                       |
| Fri Mar 1  | 2:00pm      | World Day of Prayer 2019 – Elora UC                                 |
| Sun Mar 3  | 1:00pm      | Elora UC Finance & Property Meeting - FH                            |

## In the Community



**Shine Bluegrass Music at Knox Elora Presbyterian Church, Saturday, February 9<sup>th</sup>.** Starts at 7pm. Tickets \$15. Call 519-846-0680

**Roast Beef Dinner at Knox Elora Presbyterian Church, Saturday, February 16<sup>th</sup>**



**Sittings: 5:30 & 6:30 pm.** Cost: Adults - \$20, under 12 - \$10

To reserve, please call 519-846-0680 or email [knoxelora@wightman.ca](mailto:knoxelora@wightman.ca)

Dinner by Stephen Truchan. All proceeds going to restoration of Bell Tower & Steeple

**Family Health Workshop, Saturday Feb 23<sup>rd</sup> from 8:45am-12:30pm** at Central Pentecostal Church, 7674 Colborne St., Elora. Cost is \$10. Pre-registration is required by contacting Central at 519-846-0272 or [pwhan@cpchurch.ca](mailto:pwhan@cpchurch.ca)